

# Merchant COMBO

**POWERFUL PERFORMANCE.  
ENGAGING EXPERIENCE.**

## **Faster Performance**

Delivering unparalleled speed, reliability and screen responsiveness

## **Increased Sales**

Suggestive selling and digital advertising drive impulsive and multi-product sales

## **Larger Screen**

A larger 9" touchscreen with full-motion video attracts and engages consumers



## ENGAGING EXPERIENCE

### SUGGESTIVE SELLING

Help consumers make selections while exposing them to new products, slow movers, or complimentary products

### DIGITAL ADVERTISING

Encourage sales while building brand loyalty with display advertising and interactive promotions throughout the purchase experience

### SHOPPING CART

Enable multi-product purchases with one, simple transaction

### INTEGRATED CASHLESS PAYMENT

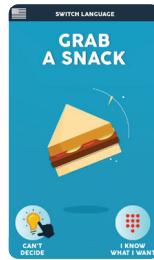
Capture every sale with a built-in and intuitive cashless solution

### LARGEST VARIETY

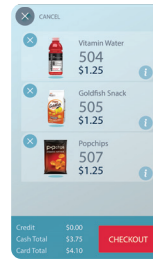
Increase sales and consumer satisfaction with the greatest product selection in the industry

### NUTRITIONAL INFORMATION

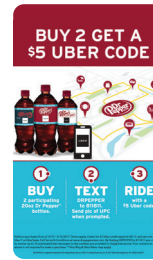
Inform consumers with a large display of easy-to-read facts to support FDA requirements



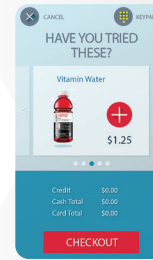
Color Display



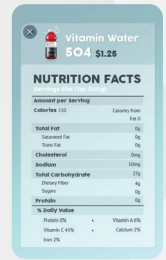
Shopping Cart



Digital Advertising



Suggestive Selling



Nutritional Information

## POWERFUL PERFORMANCE

### SCREEN PERFORMANCE

Improve the user experience with a more responsive screen and boot up time of less than a minute

### COLOR DISPLAY

Engage consumers with larger, 9-inch touchscreen and full-motion video

### REMOTE MANAGEMENT

Manage machines over the air with **simplifi CONNECT PLUS** for price changes, planograms and nutritional information

### SUREVEND TECHNOLOGY

Enable guaranteed product delivery

### PRODUCT RETAILING

Configurations for all food, combo, and chilled snacks

### OTHER OPTIONS

Multiple temperature settings, refrigeration zone barrier, and heated door

**CERTIFICATIONS** UL, cUL, CE, FCC, NAMA | **REFRIGERATION** R-134A CFC-Free Gas  
**OPERATING ENVIRONMENT** Indoor Use

### MEDIA2 MERCHANT COMBO SPECIFICATIONS

	471 4-Wide	472 6-Wide
<b>Height</b>	72"	72"
<b>Width</b>	33"	46"
<b>Depth</b>	33"	33"
<b>Weight</b>	629 lbs.	729 lbs.
<b>Electrical</b>	115 VAC 60 Hz 8A	115 VAC 60 Hz 8A
<b>Selection</b>	38 – 48	58 – 72
<b>Shelf Options</b>	4 dual-spiral snack/pastry  8 single-spiral candy  7 single-spiral bottom	6 dual-spiral snack pastry  12 single-spiral candy  10 single-spiral bottom

## CUSTOMIZE YOUR END LOCATION *Add graphics that connect with your customer.*

# MEDIA2

VISIT [CRANEMS.COM/MEDIA2](http://CRANEMS.COM/MEDIA2) OR CALL 800-621-7278 TODAY

CRANE MERCHANDISING SYSTEMS

3330 Crane Way, Williston, SC 29853-0719 | (800) 688-9090 | [cranems.com](http://cranems.com) | MADE IN USA